

### ABOUT THE PROJECT

*What becomes of natural heritage in a changing world? Is it, at present, necessary to rethink the conceptual and material preferences associated with natural heritage landscapes? And what does the mostly taken-for-granted term of “sustainability” really imply in contexts of environmental change? With special focus on the High North, Relics of Nature aims to explore understandings and manifestations of natural heritage, as well as relations between natural and cultural heritage, in the context of a rapidly changing world.*



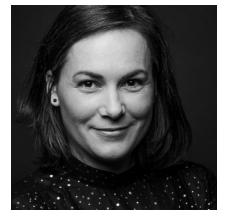
Photo by Þóra Pétursdóttir

### PROJECT MEMBERS

#### Þóra Pétursdóttir

Þóra Pétursdóttir is Associate Professor of Archaeology in the Department of Archaeology, Conservation and History at the [University of Oslo](https://www.uio.no). She is the PI of Relics of Nature.

Contact: [thora.petursdottir@iakh.uio.no](mailto:thora.petursdottir@iakh.uio.no)



#### Jamie Lorimer

Jamie Lorimer is Professor of Environmental Geography in the School of Geography and the Environment at the [University of Oxford](https://www.ou.ac.uk). Contact: [jamie.lorimer@ouce.ox.ac.uk](mailto:jamie.lorimer@ouce.ox.ac.uk)



#### Emma Waterton

Emma Waterton is Professor in the Geographies of Heritage at [Western Sydney University](https://www.westernsydney.edu.au).

Contact: [e.waterton@westernsydney.edu.au](mailto:e.waterton@westernsydney.edu.au)



#### Kyrre Kverndokk

Kyrre Kverndokk is Professor of Cultural Studies at the Department of Archaeology, History, Cultural Studies and Religion, at the [University of Bergen](https://www.uib.no), Norway.

Contact: [kyrre.kverndokk@uib.no](mailto:kyrre.kverndokk@uib.no)



#### Caitlin DeSilvey

Caitlin DeSilvey is Professor of Cultural Geography at the University of Exeter's Cornwall campus, where she is Associate Director for Transdisciplinary Research in the [Environment and Sustainability Institute](https://www.exeter.ac.uk).

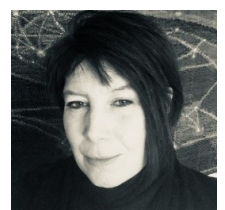
Contact: [c.o.desilvey@exeter.ac.uk](mailto:c.o.desilvey@exeter.ac.uk)



#### Christina Fredengren

Christina Fredengren is Associate professor/researcher at the Archaeological Research Laboratory, Department of Archaeology and Classical Studies at [Stockholm University](https://www.su.se) and head of research at the National Historical Museums in Sweden.

Contact: [christina.fredengren@arklab.su.se](mailto:christina.fredengren@arklab.su.se)



### **Þorgerður Ólafsdóttir**

Þorgerður Ólafsdóttir is an Icelandic artist based in Reykjavík. Her practice considers ideas and definitions of time, place and the systems we use to understand the natural world as it meets, overlaps and is interpreted within human environments.

Contact: [thorgerdurolafsdottir@gmail.com](mailto:thorgerdurolafsdottir@gmail.com)



### **Alexa Spiwak**

Alexa Spiwak is a Ph.D. fellow at the Department of Archaeology, Conservation and History at the University of Oslo.

Contact: [a.d.spiwak@iakh.uio.no](mailto:a.d.spiwak@iakh.uio.no)



### **Sanne Bech Holmgaard**

Sanne Bech Holmgaard is a Ph.D. fellow for the Relics of Nature project at the Department of Archaeology, Conservation, and History at the University of Oslo.

Contact:



### **Katherine Burlingame**

Katherine Burlingame is a postdoctoral researcher for the Relics of Nature project at the Department of Archaeology, Conservation, and History at the University of Oslo.

Contact: [katherine.burlingame@iakh.uio.no](mailto:katherine.burlingame@iakh.uio.no)



### **Elisabeth Aslesen**

Elisabeth Aslesen is the research coordinator for Relics of Nature. Contact: [elisabeth.aslesen@iakh.uio.no](mailto:elisabeth.aslesen@iakh.uio.no)



## RECENT ACTIVITIES

**25.02.2022**

**«High tech or high touch? Dead Landscapes – and how to make them live»**

**Katherine Burlingame**

Katherine presented this seminar as part of the lecture series *Permanent Transience: Heritage, Memory and Forgetting*.

**03.-04.03.2022**

**Unruly Heritage's annual workshop**

**Þóra Pétursdóttir**

Þóra Pétursdóttir participated at the research project Unruly Heritage's annual workshop 2022. The workshop was organised by Matthew and Natalia Magnani.

**18.-19.03.2022**

**NASK 2022**

Alexa Spiwak and Katherine Burlingame spoke at the Norwegian annual students' conference (NASK) 2022. Alexa participated in a panel discussion on the future of the heritage field on the 18. March and Katherine delivered a keynote lecture on the 19. March titled «The paths we tread: Climate change and shifting landscape encounters in Northern Sweden's natural heritagescapes».



Photo by Elisabeth Aslesen

## UPCOMING EVENTS

**Permanent Transience** This semester Relics of Nature is proud to present the hybrid seminar series [Permanent Transience: Heritage, Memory and Forgetting](#) in collaboration with the research project HEI: Heritage Experience Initiative and the research group MATERIALITIES at the University of Oslo.

**Nordic TAG 2022** Alexa D. Spiwak and Þóra Pétursdóttir will organise the session [Ecologies of care: more-than-human approaches to heritage landscapes](#) at this year's Nordic TAG conference, where they will also present papers alongside project members Katherine Burlingame and Christina Fredengren.

**22nd Cambridge Heritage Symposium** Þóra Pétursdóttir will deliver a keynote lecture at the [22nd annual Cambridge Heritage Symposium](#). The symposium headline is "Confronting uncertainty: Heritage Pasts and Presents in Flux", and the title of Pétursdóttir's keynote lecture is "Sustainable uncertainty: Flux and the natures of heritage"

**SAA Chicago 2022** Alexa Spiwak will be presenting at the [Society for American Archaeology Annual Meeting in Chicago \(30th March – 3rd April 2022\)](#) as part of a symposium titled *Making ground: the archaeology of waste landscapes*, organised by Jonathan Gardner (University of Edinburgh), Jeff Benjamin (Columbia University), and Matt Edgeworth (University of Leicester).

**OSEH's outing to Huken Pukkverk** Alexa Spiwak will also be participating as a guest speaker on an Oslo School of Environmental Humanities outing to Huken Pukkverk in Oslo, a defunct gravel quarry slated for landscape restoration and future use as a nature park. This outing is a part of the *Knowing Natures* course, a component of the Environmental Humanities and Sciences master's supplement, which aims to provide students with insights into different ways of doing environmental research.

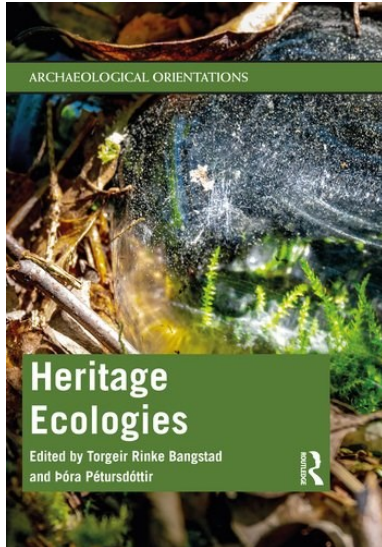
**ARV/HERITAGE moves to Bodø!** The travelling exhibition ARV/HERITAGE, previously shown in Alta, Tromsø, Sortland, Berlin, and Hammerfest, is now making its way to Bodø. ARV is based on the research project [Unruly Heritage](#) and is curated by archaeologists Bjørnar Olsen and Þóra Pétursdóttir, and artist Joar Nango, in collaboration with a team of artists and experts from Tromsø Museum.

**Adaptive Release** Relics of Nature expert panel member Prof Caitlin DeSilvey has recently been invited to share work on the concept of 'adaptive release' (which developed out of the Landscape Futures project) in a series of online presentations. Audiences include doctoral students and faculty at the Future Urban Legacy Lab, Turin, the Universidade Lusófona de Humanidades e Tecnologias, Lisbon and the HERILAND College for Heritage Planning.

**The SEES 2022 expedition to NE Svalbard** Þóra Pétursdóttir is one of approximately 50 scientists participating in the SEES 2022 expedition to Svalbard ( <https://www.rug.nl/research/arctisch-centrum/collaboration/dutchcollaboration/wbpi/sees/scientist/research-plans/> ). She will be collaborating with a team of social scientists on board, working with various questions related to understandings and experiences of climate change, nature, natural heritage, ecology and landscape. In particular, she will be collaborating with Dr Paul Wenzel Geissler, professor of anthropology at UiO <https://www.rug.nl/research/arctisch-centrum/collaboration/dutchcollaboration/wbpi/sees/scientist/research-plans/how-do-natural-scientist-assess-and-interpret-ecological-change> .

**PhD course: Ecologising History: Loss, Memory and Landscape Temporalities (5 ECTS)** 6.-9. September 2022 at Svanhovd, Finnmark. This course is part of the Ecological Globalisation research school at the Department of Social Anthropology, and seeks to enhance both theoretical, interdisciplinary and ethnographic skills, in a hands-on and explorative manner. While seeking to address a gap in anthropological training, it is also relevant for environmental humanities, archeology, human geography, environmental history and science studies. We invite participants with an interest in landscape temporalities, in the Nordic Arctic and elsewhere. Read more about the course here: [Ecologising History: Loss, Memory and Landscape Temporalities - Department of Social Anthropology](#). Þóra Pétursdóttir will be among the teachers. Application deadline: 1 May 2022. Please apply by filling out our [webform](#).

## RECENT PUBLICATIONS



- *Heritage Ecologies*. Edited by Torgeir Rinke Bangstad and Þóra Pétursdóttir. Routledge, Taylor & Francis Group, 2021.
- *Environmental humanities: a rethinking of landscape archaeology? Interdisciplinary academic research related to different perspectives of landscapes*. (Clues : Interdisciplinary studies in culture, history and heritage; Vol. 6). Edited by Sjoerd Kluiving, Kerstin Lidén and Christina Fredengren. Sidestone Press, 2021.
- "The extreme summer of 2018: Norwegian weather news and the politics of weatherlore." by Kyrre Kverndokk, in the book *Climate Change Temporalities. Explorations in Vernacular, Popular and Scientific Discourse*. Routledge, 2021, pp. 71-88.
- "After the anthropause: Lockdown lessons for more-than-human geographies." by Adam Searle, Jonathon Turnbull and Jamie Lorimer. *The Geographical Journal* 187 (1), 2021, pp. 69-77.
- "Ghosts of the Anthropocene: spectral accretions at the Port Arthur historic site." by Emma Waterton and Hayley Saul. *Landscape Research* 46 (3), 2021, pp. 362-376.
- "Landscape futures: decision-making in uncertain times, a literature review." by Nadia Bartolini and Caitlin DeSilvey. *Landscape Research* 46 (1), 2021, pp. 8-24.
- "Beyond Entanglement." by Christina Fredengren. *Current Swedish Archaeology* 29 (1), 2021, pp. 11-33.
- "Learning by feeling: excursions into the affective landscape." by Katherine Burlingame. *Journal of Geography in Higher Education*, 2021, pp. 1-13.

Do you have any comments, feedback or news that you would like to share?

Email us at [relicsofnature@gmail.com](mailto:relicsofnature@gmail.com)

More information can be found on the project's website

[www.relicsofnature.com](http://www.relicsofnature.com)



Relics of Nature



@RelicsofNature



@relicsofnatureproject



The Research Council  
of Norway



Supported by  
Arts Council Norway